

South Lewis Central School

2017-2018 ESSA Data

Board of Education Presentation

January 15, 2019

Accountability under ESSA.....



Elementary-Middle Level

Accountability Factors:

- Composite Performance (academic achievement in English language arts, math and science);
- **Student Growth** in English language arts and mathematics;
- **Progress of English language learners** towards English Language Proficiency;
- Academic Progress in English language arts and mathematics; and
- Chronic Absenteeism



Accountability under ESSA.....



High School Accountability Factors:

- Composite Performance (academic achievement in English language arts, math, science and social studies);
- Graduation Rate (4-, 5-, and 6-year cohorts);
- Progress of English language learners towards English Language Proficiency;
- Academic Progress in English language arts and mathematics;
- Chronic Absenteeism; and
- College, Career and Civic Readiness



Accountability under ESSA.....



Measures of Interim Progress (MIPs)

The Commissioner has set an end goal for the state for each of the following measures (n-size=30):

- **ELA and Math Academic Progress**
- **4-, 5-, and 6-year graduation rates**
- **English Language Proficiency**
- **Chronic Absenteeism**
- **College, Career and Civic Readiness.**

South Lewis has MIPs for the four highlighted above.



Accountability under ESSA.....



Measures of Interim Progress (MIPs)

Subject	End Goal	State LTG	NY 17-18 MIP	NY 18-19 MIP	SL 17-18 MIP	SL 18-19 MIP
Chronic Absentee – Grades 1-8	5%	13.3%	15%	14.6%	15.7%	15.3%
3-8 ELA	200	117.3	100.7	104.8	109	112.8
3-8 Math	200	119.4	103.3	107.3	115.5	119
Chronic Absentee – Grades 9-12	5%	20.4%	23.4%	22.6%	24%	23.2%
College, Career and Civic Ready	175	136	138.2	130.2	151	152



Accountability under ESSA.....



How are MIPs Calculated?

- An **End Goal** was determined by NYSED
- A **baseline** was established using **2016-2017** data and the gap between the two calculated.
- 20% of the gap plus the baseline equals the **long term goal** (LTG = 20% gap closure).
- The gap was divided by 5 (5 years to close the gap by 20% - SY 2021-2022)
- The **1/5 of the gap** is added to each year to determine the Measure of Interim Progress



Accountability under ESSA.....



What MIPs were established for South Lewis?

- **District wide** and for each **building**
- **Categories:** Chronic Absenteeism, 3-8 ELA and Math, Graduation Rate 4-, 5- and 6-Year Cohort, College, Career & Civic Readiness, High School ELA and Math
- **Subgroup Accountability:** All Students, Economically Disadvantaged, Students with Disabilities, and White



Accountability under ESSA.....



Measures of Interim Progress (MIPs)

3-8 ELA GOALS & INTERIM MEASURES



3-8 ELA MEASURES OF INTERIM PROGRESS, LONG TERM GOALS AND LEVELS ACHIEVED

GROUP NAME	YOUR SCORE	YOUR MIP	2017-18 STATE MIP	2020-2021 LONG TERM STATE GOAL	STATE EXCEEDED LONG TERM GOAL	LEVEL ACHIEVED
All Students	130.86	109	100.7	117.3	158.7	L4
Asian/Pacific Islander			155.1	162.6	181.3	
Black	83.33		93.9	111.6	155.8	
Economically Disadvantaged	121.16	96.7	90.7	108.9	154.5	L4
English Language Learners			60.8	84.0	142.0	
Hispanic	212.50		90.8	109.0	154.5	
Multiracial	80.00		97.6	114.6	157.3	
American Indian/ Alaska Native			97.2	114.3	157.2	
Students with Disabilities	75.00	63	54.4	78.6	139.3	L3
White	132.00	110.3	98.0	115.0	157.5	L4



Accountability under ESSA.....



Elementary/Middle Accountability – Student Growth

School/District	Subgroup	Growth Index	Growth Level
SLCSD	All Students	50.2	Level 3
SLCSD	Economically Disadvantaged	50.4	Level 3
SLCSD	Multiracial	56.9	Level 4
SLCSD	Students with Disabilities	54.3	Level 4
SLCSD	White	50.1	Level 3

Growth Index	Growth Level
45% or Less	1
45.1 to 50%	2
50.1 to 54%	3
Greater than 54%	4



Accountability under ESSA.....



School Accountability Designations

Designation	Designation Criteria
Recognition Schools	A school that is high-performing or rapidly improving as determined by the Commissioner
Schools in Good Standing	A school that is not TSI, CSI or Recognition
Targeted Support and Improvement Schools (TSI)	A school with low-performing subgroups of students
Comprehensive Support and Improvement Schools (CSI)	A school with low overall performance for the All Students group, a graduation rate below 67% , or a school with low-performing subgroups that have not improved



Accountability Status.....



South Lewis ESSA Accountability Status

School/District	2017-2018 Designation	2018-2019 Designation
South Lewis Central School District	Good Standing	Good Standing
South Lewis High School	Good Standing	Good Standing
South Lewis Middle School	Good Standing	Good Standing
Glenfield Elementary	Good Standing	Good Standing
Port Leyden Elementary	Good Standing	Good Standing

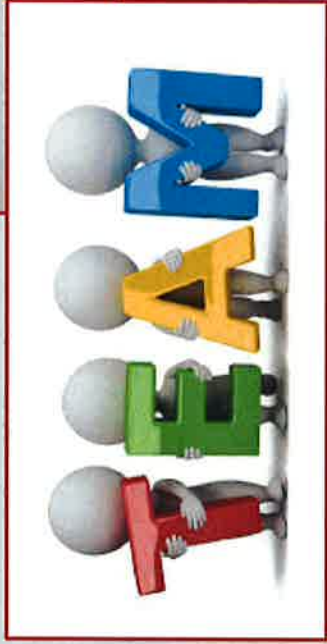
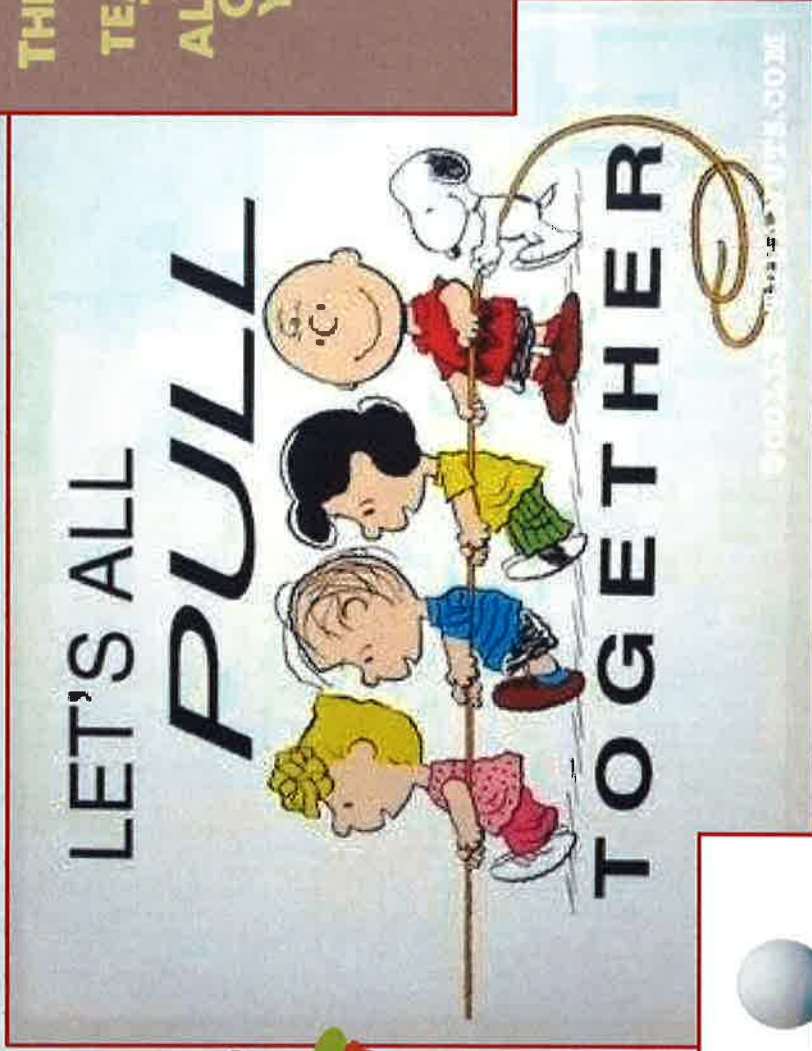


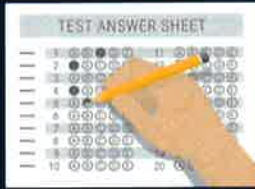
Thank you for all you do for the students of our district.....



THE NICE THING ABOUT TEAMWORK IS THAT YOU ALWAYS HAVE OTHERS ON YOUR SIDE.

MARGARET CARTY





3-8 ELA GOALS & INTERIM MEASURES

	GROUP NAME	YOUR SCORE	YOUR MIP	2017-18 STATE MIP	2020-2021 LONG TERM STATE GOAL	STATE EXCEEDED LONG TERM GOAL	LEVEL ACHIEVED
3-8 ELA MEASURES OF INTERIM PROGRESS, LONG TERM GOALS AND LEVELS ACHIEVED	All Students	130.86	109	100.7	117.3	158.7	L4
	Asian/Pacific Islander			155.1	162.6	181.3	
	Black	83.33		93.9	111.6	155.8	
	Economically Disadvantaged	121.16	96.7	90.7	108.9	154.5	L4
	English Language Learners			60.8	84.0	142.0	
	Hispanic	212.50		90.8	109.0	154.5	
	Multiracial	80.00		97.6	114.6	157.3	
	American Indian/ Alaska Native			97.2	114.3	157.2	
	Students with Disabilities	75.00	63	54.4	78.6	139.3	L3
	White	132.00	110.3	98.0	115.0	157.5	L4

* School and district scores can be located on SIRS-106, column n

	DID NOT MEET LONG-TERM GOAL	MET LONG-TERM GOAL	EXCEEDED LONG-TERM GOAL
DID NOT MEET EITHER MIP	Level 1	N/A	N/A
MET LOWER OF STATE OR SCHOOL MIP	Level 2	Level 3	N/A
MET HIGHER OF THE STATE OR SCHOOL MIP	Level 3	Level 4	Level 4



3-8 MATHEMATICS GOALS & INTERIM MEASURES

	GROUP NAME	YOUR SCORE	YOUR MIP	2017-18 STATE MIP	2020-2021 LONG TERM STATE GOAL	STATE EXCEEDED LONG TERM GOAL	LEVEL ACHIEVED
3-8 MATHEMATICS MEASURES OF INTERIM PROGRESS, LONG TERM GOALS AND LEVELS ACHIEVED	All Students	127.04	115.5	103.3	119.4	159.7	L4
	Asian/Pacific Islander			173.0	177.5	188.8	
	Black	66.67		83.1	102.6	151.3	
	Economically Disadvantaged	117.87	104.8	89.4	107.8	153.9	L4
	English Language Learners			77.9	98.2	149.1	
	Hispanic	175.00		87.0	105.8	152.9	
	Multiracial	77.78		99.3	116.1	158.1	
	American Indian/ Alaska Native			94.8	112.3	156.2	
	Students with Disabilities	53.18	51.4	54.4	78.6	139.3	L2
	White	128.54	117.6	106.3	121.9	161.0	L4

* School and district scores can be located on SIRS-106, column n

	DID NOT MEET LONG-TERM GOAL	MET LONG-TERM GOAL	EXCEEDED LONG-TERM GOAL
DID NOT MEET EITHER MIP	Level 1	N/A	N/A
MET LOWER OF STATE OR SCHOOL MIP	Level 2	Level 3	N/A
MET HIGHER OF THE STATE OR SCHOOL MIP	Level 3	Level 4	Level 4

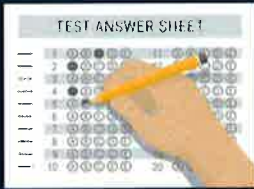


HIGH SCHOOL ELA GOALS & INTERIM MEASURES

HIGH SCHOOL ELA MEASURES OF INTERIM PROGRESS, LONG TERM GOALS AND LEVELS ACHIEVED	GROUP NAME	YOUR SCORE	YOUR MIP	2017-18 STATE MIP	2020-2021 LONG TERM STATE GOAL	STATE EXCEEDED LONG TERM GOAL	LEVEL ACHIEVED
	All Students	203.42	180.3	189.4	193.6	204.3	L4
	Asian/Pacific Islander			208.7	209.7	212.4	
	Black			160.4	169.5	192.3	
	Economically Disadvantaged	190.91	164.1	168.8	176.5	195.8	L4
	English Language Learners			87.7	108.9	162.0	
	Hispanic			163.4	172.0	193.5	
	Multiracial	166.67		197.7	200.6	207.8	
	American Indian/ Alaska Native			168.1	175.9	195.5	
	Students with Disabilities	121.43	91.8	116.3	132.8	173.9	L3
White	205.00	181.7	207.8	209.0	212.0	L2	

* School and district scores can be located on SIRS-105, first table, column j

	DID NOT MEET LONG-TERM GOAL	MET LONG-TERM GOAL	EXCEEDED LONG-TERM GOAL
DID NOT MEET EITHER MIP	Level 1	N/A	N/A
MET LOWER OF STATE OR SCHOOL MIP	Level 2	Level 3	N/A
MET HIGHER OF THE STATE OR SCHOOL MIP	Level 3	Level 4	Level 4



HIGH SCHOOL MATHEMATICS GOALS & INTERIM MEASURES

	GROUP NAME	YOUR SCORE	YOUR MIP	2017-18 STATE MIP	2020-2021 LONG TERM STATE GOAL	STATE EXCEEDED LONG TERM GOAL	LEVEL ACHIEVED
HIGH SCHOOL MATH MEASURES OF INTERIM PROGRESS, LONG TERM GOALS AND LEVELS ACHIEVED	All Students	111.64	126.9	149.1	157.6	178.8	L1 (L2**)
	Asian/Pacific Islander			191.0	192.5	196.3	
	Black			112.9	127.4	163.7	
	Economically Disadvantaged	104.55	117.5	127.9	139.9	170.0	L1 (L2**)
	English Language Learners			94.1	111.8	155.9	
	Hispanic			120.7	133.9	167.0	
	Multiracial	66.67		150.5	158.7	179.4	
	American Indian/Alaska Native			128.1	140.1	170.1	
	Students with Disabilities	64.29	43.2	86.0	105.0	152.5	L2
	White	113.57	130.2	166.4	172.0	186.0	L1 (L2**)

* School and district scores can be located on SIRS-105, second table, column j

	DID NOT MEET LONG-TERM GOAL	MET LONG-TERM GOAL	EXCEEDED LONG-TERM GOAL
DID NOT MEET EITHER MIP	Level 1	N/A	N/A
MET LOWER OF STATE OR SCHOOL MIP	Level 2	Level 3	N/A
MET HIGHER OF THE STATE OR SCHOOL MIP	Level 3	Level 4	Level 4



4-YEAR COHORT GRADUATION RATE GOALS & INTERIM MEASURES

	GROUP NAME	YOUR SCORE	YOUR MIP	2017-18 STATE MIP	2020-2021 LONG TERM STATE GOAL	STATE EXCEEDED LONG TERM GOAL	LEVEL ACHIEVED
GRADUATION RATE MEASURES OF INTERIM PROGRESS, LONG TERM GOALS AND LEVELS ACHIEVED	All Students	88.73	85	82.3	84.4	89.7	L4
	Asian/Pacific Islander			88.0	89.2	92.1	
	Black	100		72.4	76.2	85.6	
	Economically Disadvantaged	86.96	78	76.1	79.2	87.1	L4
	English Language Learners			51.2	58.5	76.8	
	Hispanic	100		72.2	76.0	85.5	
	Multiracial	100		83.2	85.2	90.1	
	American Indian/ Alaska Native			68.6	73.0	84.0	
	Students with Disabilities	68.75	54.6	58.2	64.4	79.7	L4
	White	87.88	85.7	90.0	90.8	92.9	L2

* School and district scores can be located on SIRS-105, last table, column d

	DID NOT MEET LONG-TERM GOAL	MET LONG-TERM GOAL	EXCEEDED LONG-TERM GOAL
DID NOT MEET EITHER MIP	Level 1	N/A	N/A
MET LOWER OF STATE OR SCHOOL MIP	Level 2	Level 3	N/A
MET HIGHER OF THE STATE OR SCHOOL MIP	Level 3	Level 4	Level 4



5-YEAR COHORT GRADUATION RATE GOALS & INTERIM MEASURES

	GROUP NAME	YOUR SCORE	YOUR MIP	2017-18 STATE MIP	2020-2021 LONG TERM STATE GOAL	STATE EXCEEDED LONG TERM GOAL	LEVEL ACHIEVED
GRADUATION RATE MEASURES OF INTERIM PROGRESS, LONG TERM GOALS AND LEVELS ACHIEVED	All Students	87.01	85.9	84.5	86.4	91.2	L4
	Asian/Pacific Islander	100		89.9	90.9	93.5	
	Black	0		75.9	79.3	87.7	
	Economically Disadvantaged	83.33	77.9	79.7	82.4	89.2	L4
	English Language Learners			58.9	65.1	75.6	
	Hispanic	50		74.8	78.3	87.2	
	Multiracial	0		84.5	86.4	91.2	
	American Indian/ Alaska Native			74.2	77.8	86.9	
	Students with Disabilities	62.50	54.5	61.6	67.4	81.7	L3
	White	87.84	85.3	91.3	92.1	94.1	L2

* School and district scores can be located on SIRS-105, last table, column h

	DID NOT MEET LONG-TERM GOAL	MET LONG-TERM GOAL	EXCEEDED LONG-TERM GOAL
DID NOT MEET EITHER MIP	Level 1	N/A	N/A
MET LOWER OF STATE OR SCHOOL MIP	Level 2	Level 3	N/A
MET HIGHER OF THE STATE OR SCHOOL MIP	Level 3	Level 4	Level 4



6-YEAR COHORT GRADUATION RATE GOALS & INTERIM MEASURES

	GROUP NAME	YOUR SCORE	YOUR MIP	2017-18 STATE MIP	2020-2021 LONG TERM STATE GOAL	STATE EXCEEDED LONG TERM GOAL	LEVEL ACHIEVED
GRADUATION RATE MEASURES OF INTERIM PROGRESS, LONG TERM GOALS AND LEVELS ACHIEVED	All Students	86.67	83.4	84.6	86.7	91.9	L4
	Asian/Pacific Islander	0		89.4	90.7	93.9	
	Black	0		76.0	79.5	88.3	
	Economically Disadvantaged	78.72	75.4	80.0	82.8	89.9	L2
	English Language Learners			59.0	65.3	81.2	
	Hispanic	100		75.2	78.8	87.9	
	Multiracial	100		82.7	85.1	91.1	
	American Indian/ Alaska Native			71.1	75.4	86.2	
	Students with Disabilities	64.71	53.2	59.9	66.1	81.6	L3
	White	86.11	83	91.0	92.0	94.5	L2

* School and district scores can be located on SIRS-105, last table, column 1

	DID NOT MEET LONG-TERM GOAL	MET LONG-TERM GOAL	EXCEEDED LONG-TERM GOAL
DID NOT MEET EITHER MIP	Level 1	N/A	N/A
MET LOWER OF STATE OR SCHOOL MIP	Level 2	Level 3	N/A
MET HIGHER OF THE STATE OR SCHOOL MIP	Level 3	Level 4	Level 4



COLLEGE, CAREER & CIVIC READINESS GOALS & INTERIM MEASURES

	GROUP NAME	YOUR SCORE	YOUR MIP	2017-18 STATE MIP	2020-2021 LONG TERM STATE GOAL	STATE EXCEEDED LONG TERM GOAL	LEVEL ACHIEVED
CCCR MEASURES OF INTERIM PROGRESS, LONG TERM GOALS AND LEVELS ACHIEVED	All Students	156.49	151	128.2	136.0	155.5	L4
	Asian/Pacific Islander			153.2	156.8	165.9	
	Black	150.00	103	98.0	110.8	142.9	L4
	Economically Disadvantaged	146.88	144.8	110.2	121.0	148.0	L4
	English Language Learners			37.7	60.6	117.8	
	Hispanic		71	101.4	113.6	144.3	
	Multiracial	150	119	127.9	135.7	155.4	L4
	American Indian/Alaska Native			100.4	112.8	143.9	
	Students with Disabilities	144.12	85	72.2	89.3	132.2	L4
	White	156.85	153.9	148.6	153.0	164.0	L4

* School and district scores can be located on SIRS-108, column h

	DID NOT MEET LONG-TERM GOAL	MET LONG-TERM GOAL	EXCEEDED LONG-TERM GOAL
DID NOT MEET EITHER MIP	Level 1	N/A	N/A
MET LOWER OF STATE OR SCHOOL MIP	Level 2	Level 3	N/A
MET HIGHER OF THE STATE OR SCHOOL MIP	Level 3	Level 4	Level 4



GRADES 1-8 CHRONIC ABSENTEEISM GOALS & INTERIM MEASURES

	GROUP NAME	YOUR SCORE	YOUR MIP	2017-18 STATE MIP	2020-2021 LONG TERM STATE GOAL	STATE EXCEEDED LONG TERM GOAL	LEVEL ACHIEVED
CHRONIC ABSENTEEISM MEASURES OF INTERIM PROGRESS, LONG TERM GOALS AND LEVELS ACHIEVED	All Students	12.2	15.7	15.0	13.3	9.2	L4
	Asian/Pacific Islander	0		8.3	7.7	6.4	
	Black	50		20.8	18.2	11.6	
	Economically Disadvantaged	15.7	19.3	20.5	17.9	11.5	L4
	English Language Learners	50		18.1	15.9	10.5	
	Hispanic	7.1		20.4	17.8	11.4	
	Multiracial	22.2		17.0	15.0	10.0	
	American Indian/ Alaska Native			21.3	18.6	11.8	
	Students with Disabilities	13.4	24.8	22.2	19.3	12.2	L4
	White	11.7	14.7	10.7	9.7	7.4	L2

* School and district scores can be located on SIRS-107, column c

	DID NOT MEET LONG-TERM GOAL	MET LONG-TERM GOAL	EXCEEDED LONG-TERM GOAL
DID NOT MEET EITHER MIP	Level 1	N/A	N/A
MET LOWER OF STATE OR SCHOOL MIP	Level 2	Level 3	N/A
MET HIGHER OF THE STATE OR SCHOOL MIP	Level 3	Level 4	Level 4



GRADES 9-12 CHRONIC ABSENTEEISM GOALS & INTERIM MEASURES

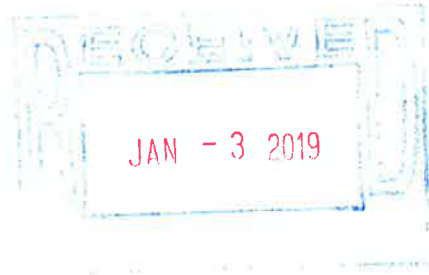
	GROUP NAME	YOUR SCORE	YOUR MIP	2017-18 STATE MIP	2020-2021 LONG TERM STATE GOAL	STATE EXCEEDED LONG TERM GOAL	LEVEL ACHIEVED
CHRONIC ABSENTEEISM MEASURES OF INTERIM PROGRESS, LONG TERM GOALS AND LEVELS ACHIEVED	All Students	23.1	24	23.4	20.4	12.7	L3
	Asian/Pacific Islander	0		14.4	12.8	8.9	
	Black	0		32.7	28.1	16.6	
	Economically Disadvantaged	28.0	29.1	31.3	26.9	16.0	L3
	English Language Learners	0		35.1	30.1	17.6	
	Hispanic	0		32.8	28.2	16.6	
	Multiracial	25		23.9	20.8	12.9	
	American Indian/ Alaska Native			36.1	30.9	18.0	
	Students with Disabilities	31.3	33.6	34.0	29.2	17.1	L3
	White	23.4	23.4	16.1	14.3	9.7	L2

* School and district scores can be located on SIRS-107, column f

	DID NOT MEET LONG-TERM GOAL	MET LONG-TERM GOAL	EXCEEDED LONG-TERM GOAL
DID NOT MEET EITHER MIP	Level 1	N/A	N/A
MET LOWER OF STATE OR SCHOOL MIP	Level 2	Level 3	N/A
MET HIGHER OF THE STATE OR SCHOOL MIP	Level 3	Level 4	Level 4

South Lewis Agriculture Department

East Road
Turin, NY 13473
(315)348-2520
rhumphrey@southlewis.org



January 3rd, 2019

Dear Mr. Premo;

The South Lewis FFA would once again like to “unplug” and attend the FFA Winter Weekend which will be held at the Oswegatchie Educational Center in Croghan. This year’s event will be March 1st, 2nd, and 3rd. 10-15 South Lewis FFA members will be attending camp and participating in many leadership development activities. New this year, South Lewis FFA members will be able to interact with John Bowne students during meals to learn about urban agriculture!

Attached you will find a schedule for the weekend. Please contact me with any questions.

Thank you,

A handwritten signature in black ink that reads 'Rachael R. Humphrey'. The signature is written in a cursive, flowing style.

Miss Rachael R. Humphrey
South Lewis FFA Advisor

Oswegatchie Education Center

Long Pond Road - Croghan

Winter Weekend 2019

Friday

3:00 PM – depart from school

Ice Breaker Activities (organized by Libby McGuire)

Dinner with John Bowne

Indoor Team Challenges

Scavenger Hunt

Nocturnal Nature Hike

Saturday

Breakfast

Snowshoe Hike

Lunch

Survival Training

Dinner with John Bowne

Skit Night

Movie

Sunday

Breakfast

Clean lodge

Depart for home by 9:30 AM